

# *Rural Lifestyle Buildings*

VOLUME 1



**16 Detailed Plans**

**FBi Buildings**

Including a variety of Storage, Utility and Hobby Buildings  
designed for the way you live (or want to live)

Enjoy the Rural Lifestyle Plan Book Vol. 1 from FBi Buildings.

This plan book was created to be a helpful resource to you as you begin the planning process of your new building. Our goal is to make it easy to plan, buy, build and own the right building for you. One of the best ways to start the planning process is to look at what others have done.

These plans represent a wide range of applications, from simple hobby shops and garages to large, elaborate structures. Our customers have told us they enjoy seeing this variety because much can be gleaned from buildings of various sizes and styles.

We also offer another excellent planning tool, our online FBiPlanner™. This industry-leading web tool lets you design your dream floor plan and then fill it with scaled items, such as boats, RVs, ATVs, trucks, tractors, trailers, work shop items and much more. As you thumb through this book, you'll see various building layout samples. You can find these same plans on the FBiPlanner™ tool online for you to customize and make your own! It is a free resource and you can find it at [fbibuildings.com/plan-book](http://fbibuildings.com/plan-book).

No matter where you are in the planning process, feel free to give us a call at 1-800-552-2981. Our team stands ready to assist with design/engineering, permits, pricing – whatever it takes to help you maximize the value of your building investment while moving your project from a dream to your reality.

Sincerely,

A handwritten signature in black ink that reads "Miles Ridgway". The signature is written in a cursive, flowing style.

Miles Ridgway  
President, FBi Buildings



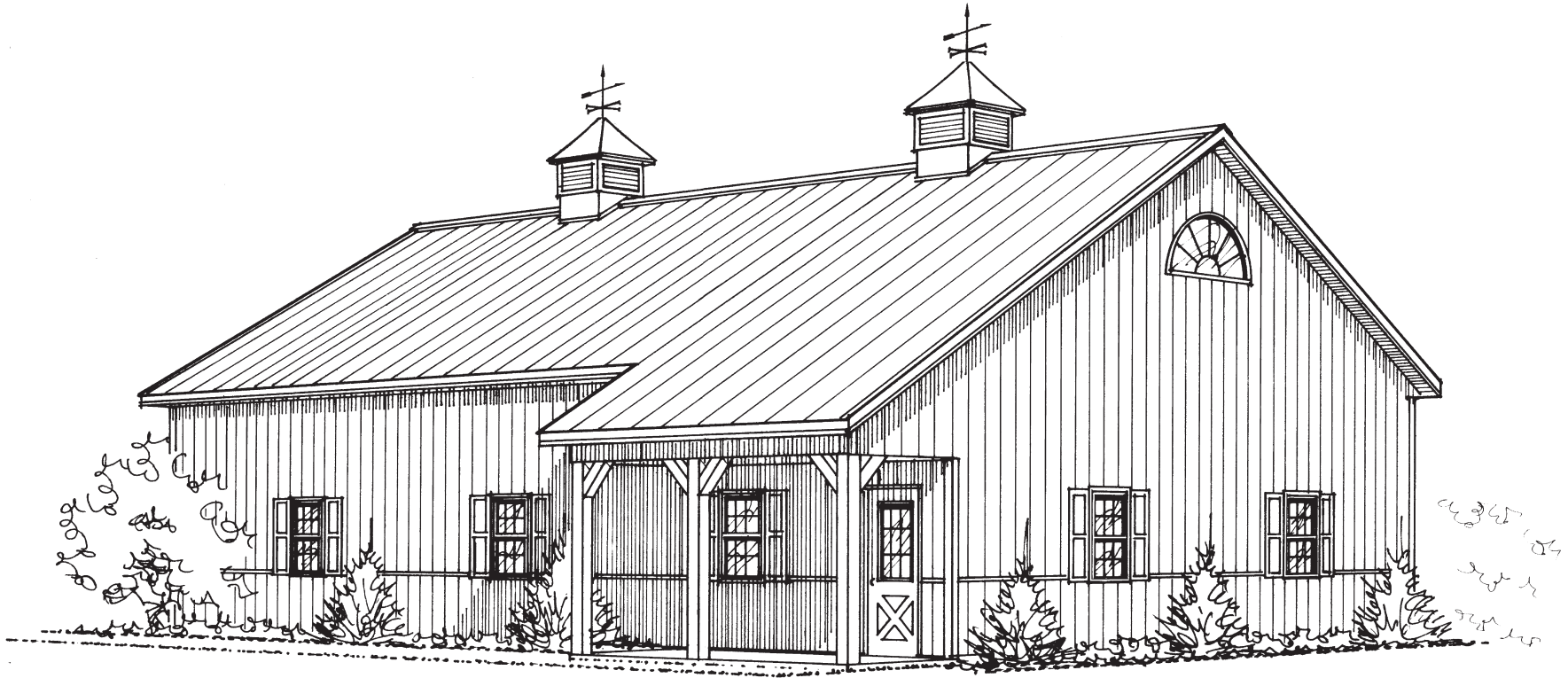










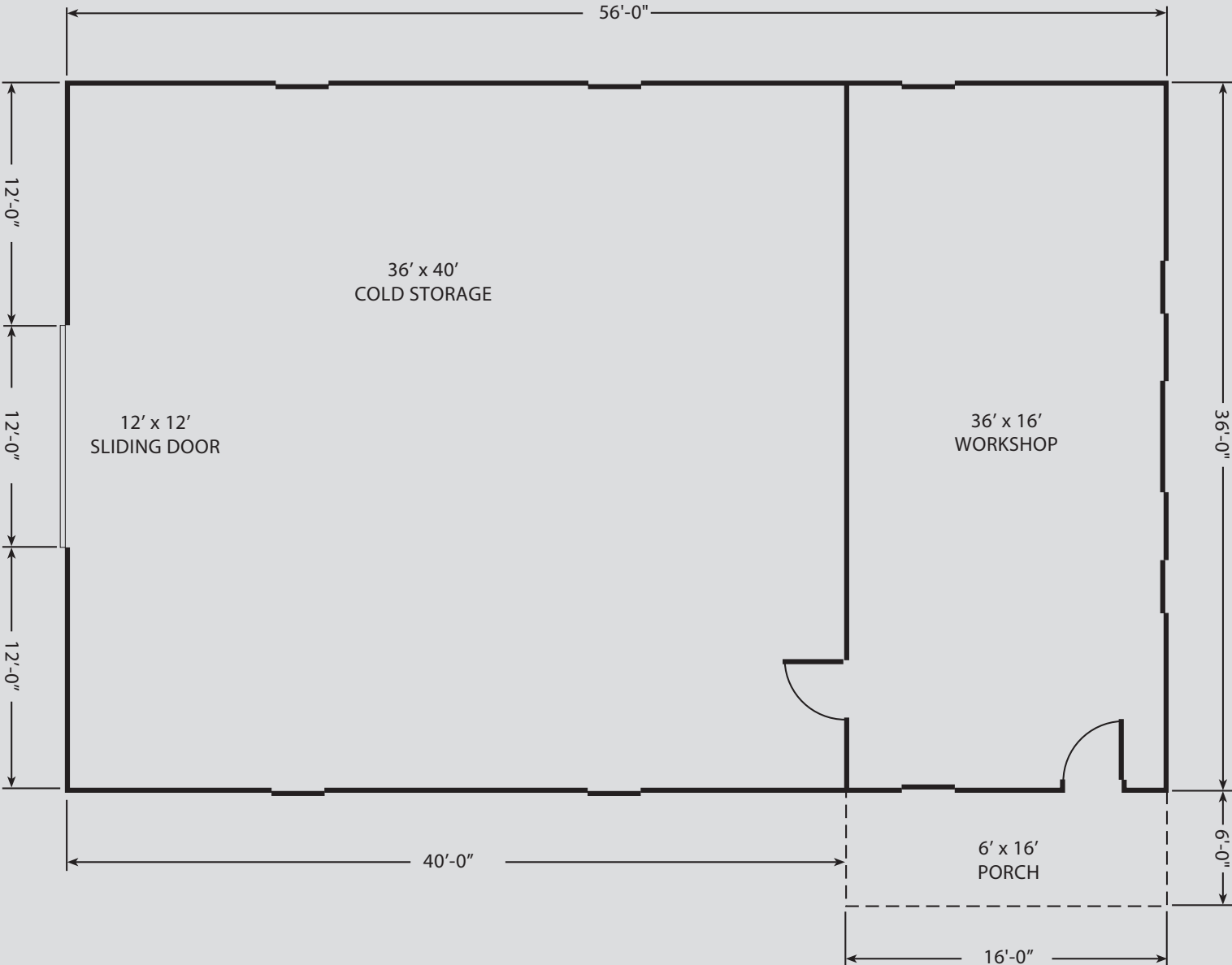


## *Suburbanite's Envy*

SIZED TO FIT EVEN THE SMALLEST OF COUNTRY LOTS, this building may just become the favorite part of your property. A handsome design combines with no-nonsense functionality. A comfortably proportioned workshop is accessed from the inviting covered porch. The "cold storage" part of the building provides enough room for all the trappings of country living: utility tractor, Gator, 4-wheeler, camper and extra pickup truck.



FITS EVEN THE SMALLEST OF COUNTRY LOTS





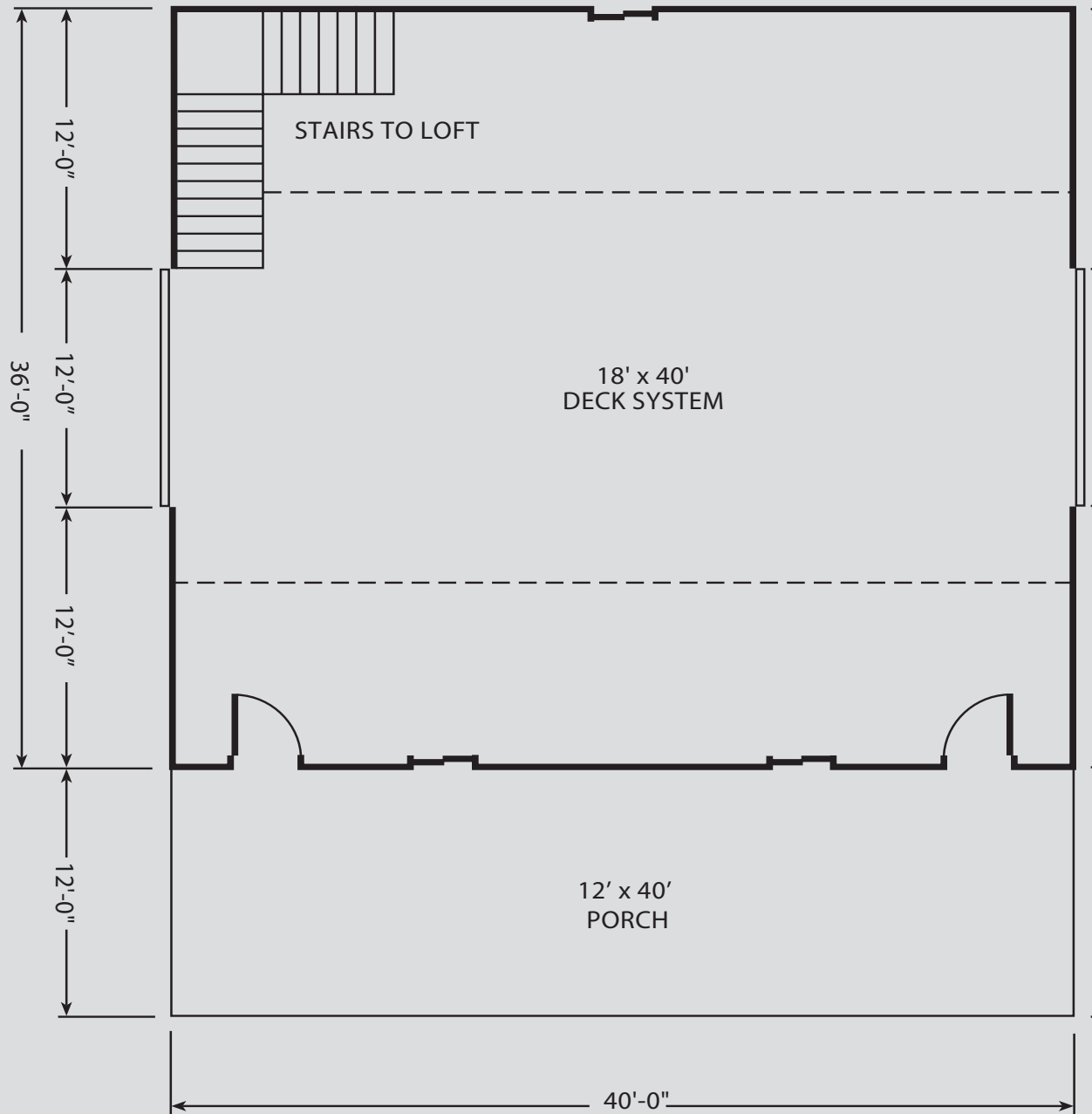
# *Appalachian Retreat*

SPORTING A CLASSIC LOOK THAT NEVER GOES OUT OF STYLE, this building features sliding doors at each end to make access easy for vehicles or equipment. But this building isn't just about storage; it's also about recreation. The large front porch is an ideal place to hang out with friends and family after a summer barbecue.





AN ENDURING, CLASSIC LOOK





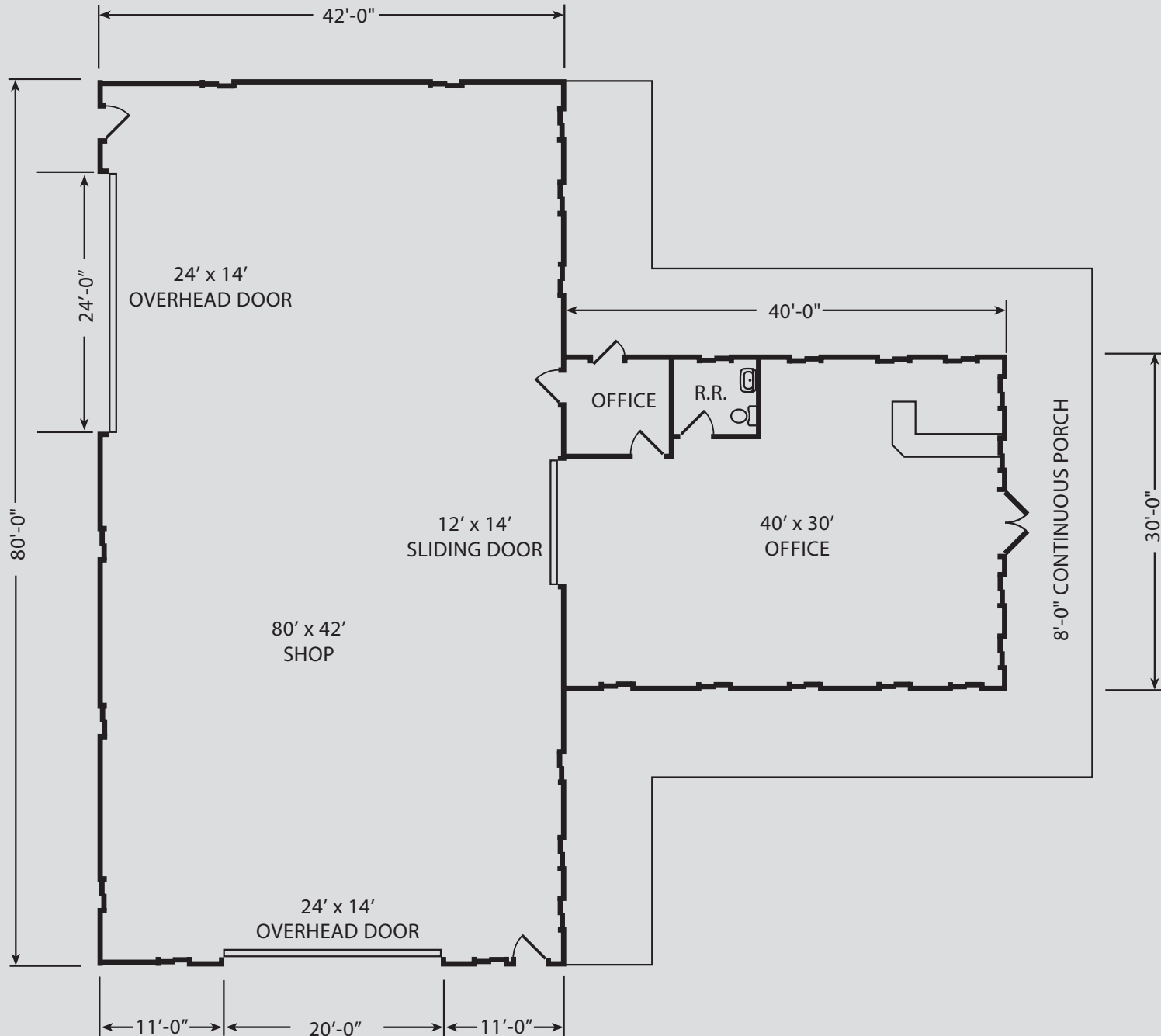
# *Country Gentleman*

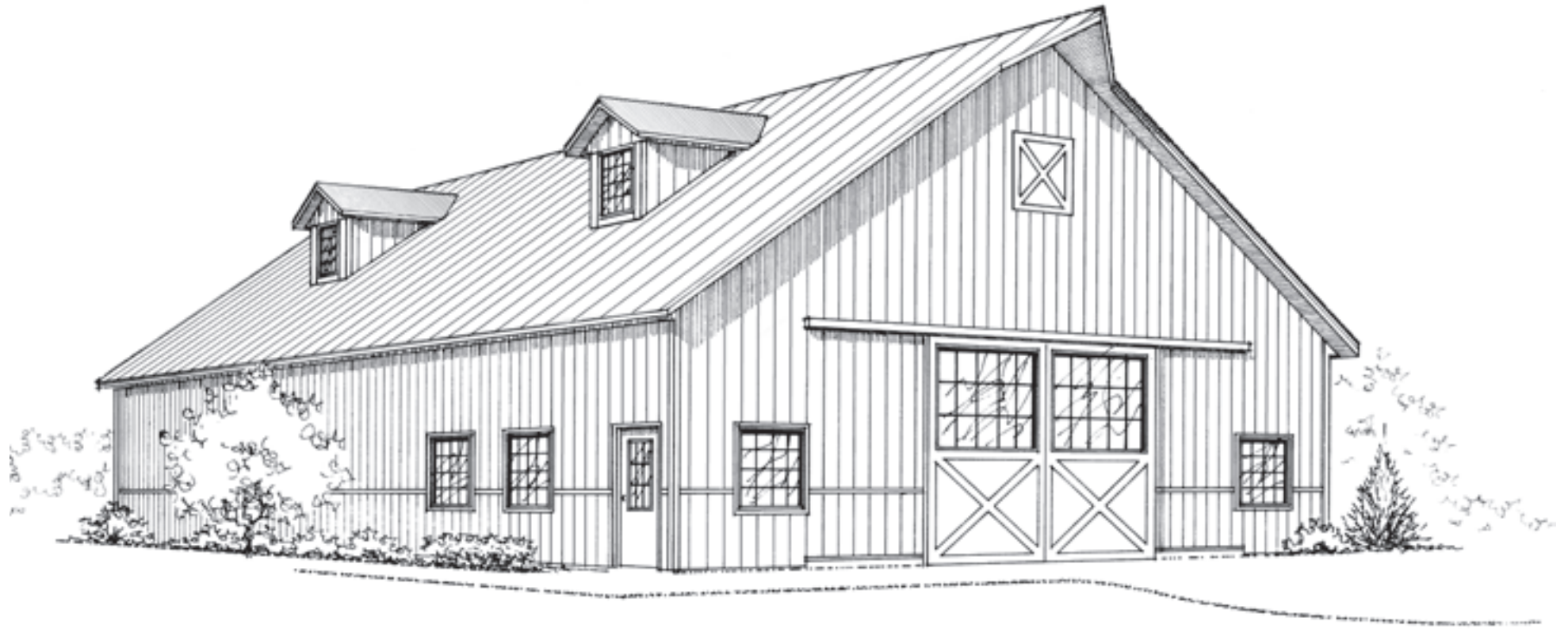
EVOKING QUIET GRACE,

this beauty will look like it's always belonged on your property. A cordial wrap-around porch, flying overhangs, stylish cupolas, and other design details give this barn a timeless quality. The "T" shape provides an array of possibilities. You could use the front section to run a pumpkin stand or apple orchard sideline business. Or make it a family rec center. In back, store lots of vehicles, tractors, or supplies in the large shop area.



LOOKS LIKE IT BELONGS





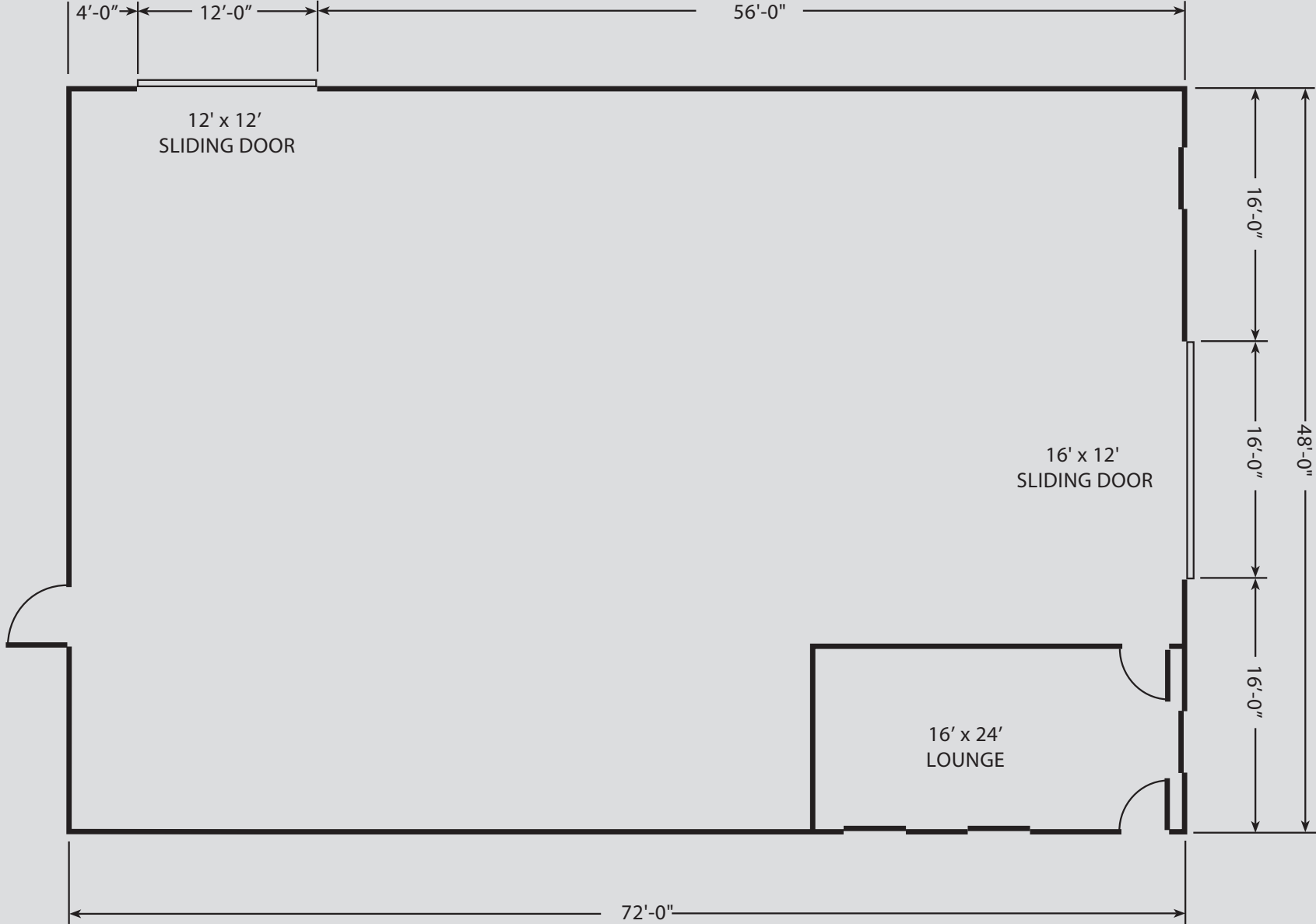
## *Greenbelt Studio*



### THIS STYLISH STORAGE BUILDING

combines urban sophistication with country accents. A steeply pitched roof with dormers meshes nicely with the decorative sliding doors, hay mow door, and flying overhang. Inside is lots of room for you to enjoy your hobbies or park your toys. A lounge area provides a comfortable place for you and your friends to relax after wrenching on your classic cars or playing a game of basketball.

COMBINES URBAN SOPHISTICATION WITH COUNTRY ACCENTS





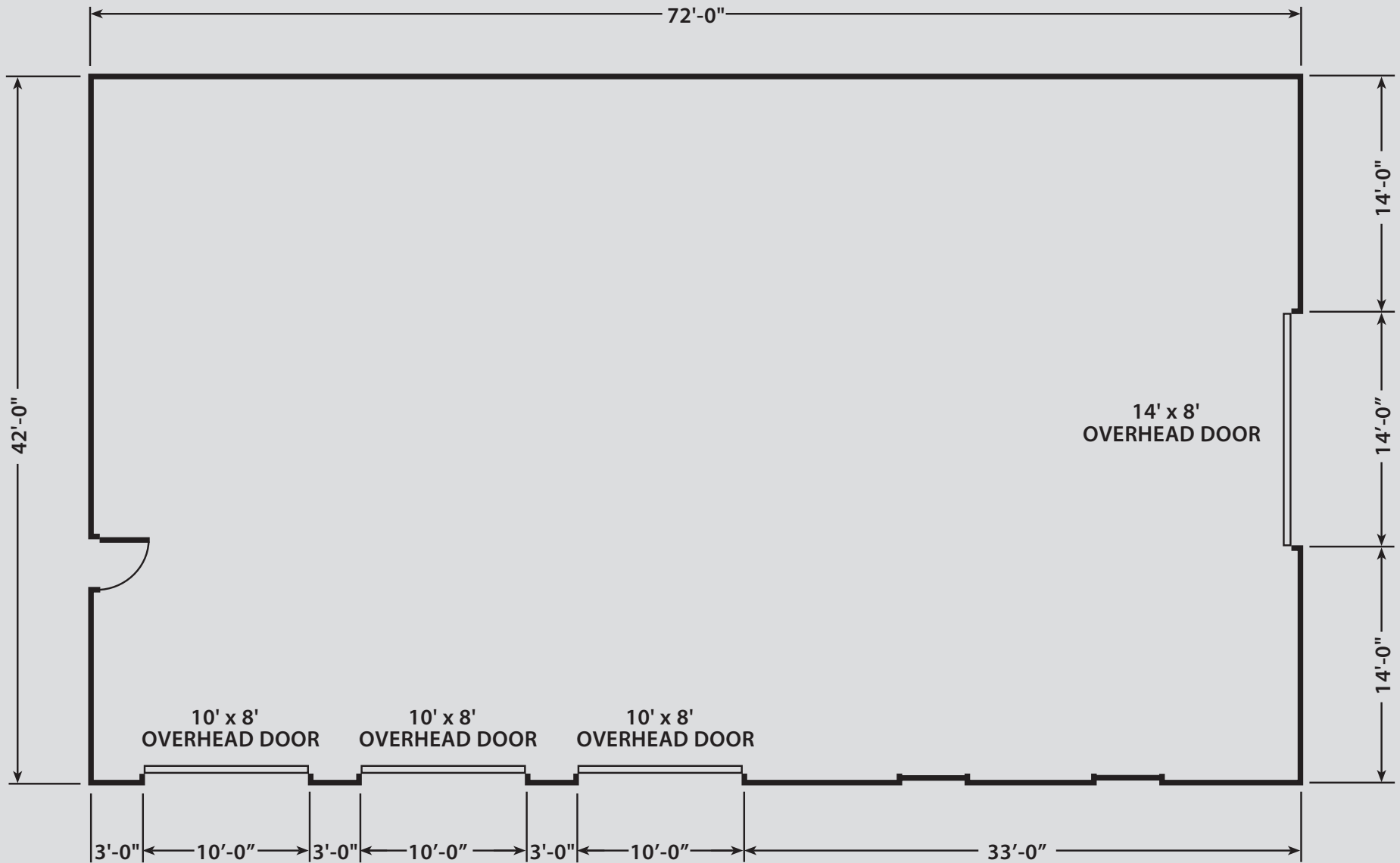


# *Coachmaster*

ATTRACTIVE, BUT NOT OSTENTATIOUS,

this spacious building is a deluxe garage and so much more. Three overhead doors provide a parking spot for all your kids' vehicles, while the extra wide door on the endwall accommodates Dad's dually and trailer. Best of all, after pulling in all your cars and trucks, you still have oodles of room left over. Store your boat, create a voluminous shop, setup an indoor skating rink – the possibilities are endless!

A DELUXE GARAGE, AND SO MUCH MORE







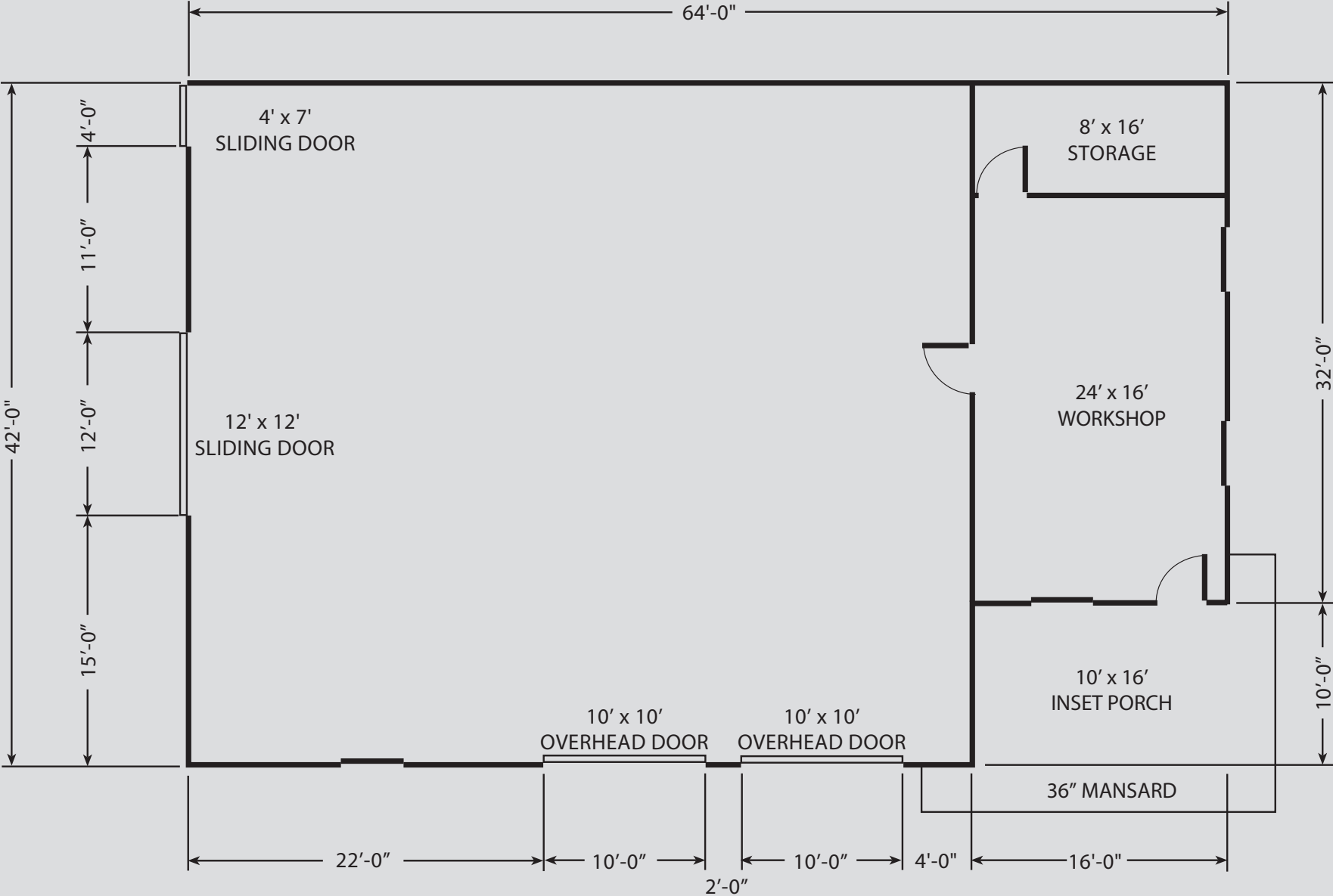
# *Liberty Summons*

PICTURE THIS IN THE CORNER OF YOUR BACKYARD...

the perfect complement to your house with matching shingles and color scheme. The inset porch is the ideal shady place to spend a lazy summer's evening, perhaps watching your children ride motorcycles or ATVs around your property. Inside, you'll appreciate the workshop and out-of-sight storage room. The garage area features roomy overhead doors for your vehicles and a sliding door in the back for your utility tractor.



THE PERFECT COMPLEMENT TO YOUR HOUSE





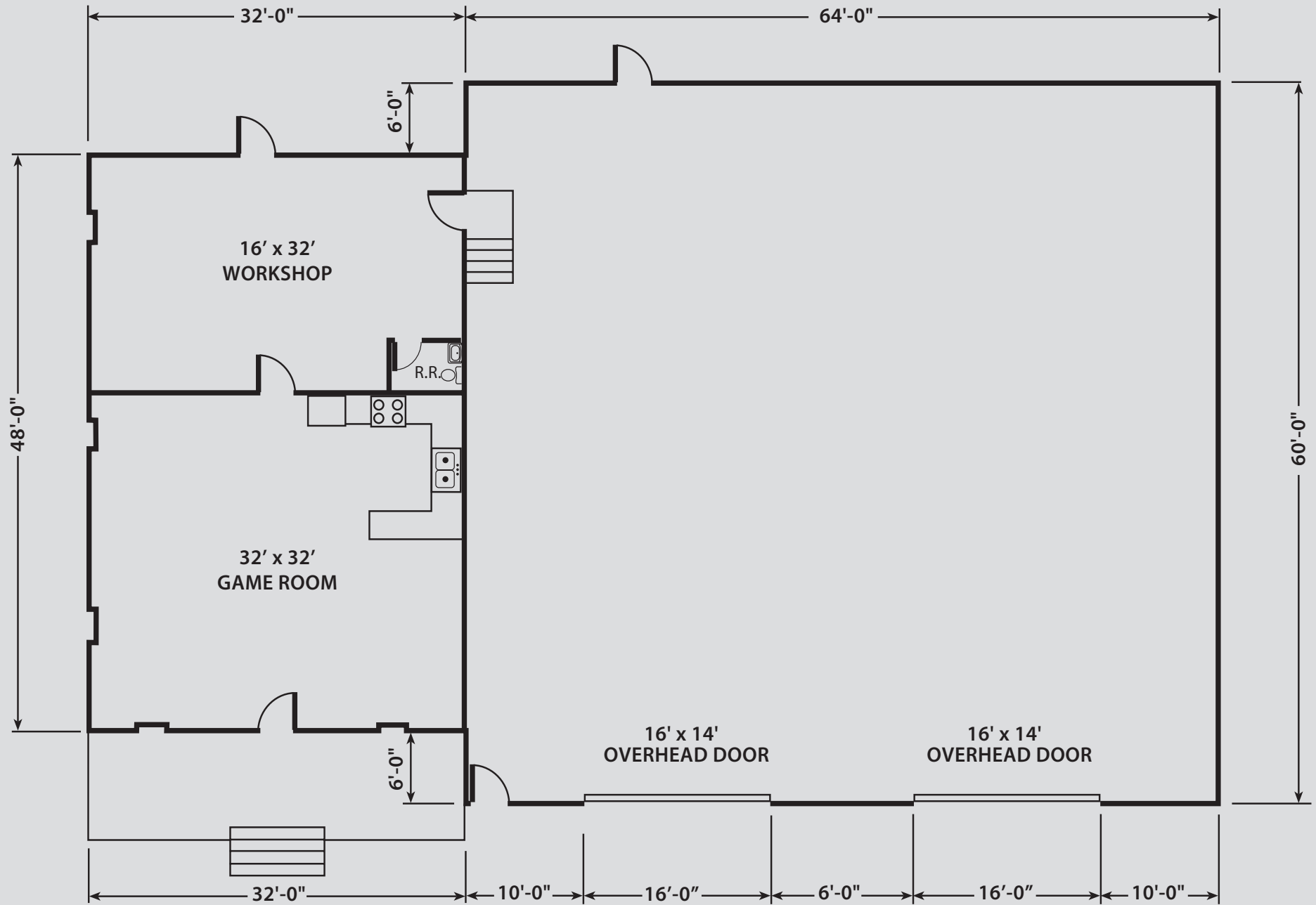
## *Work-n-Pleasure*

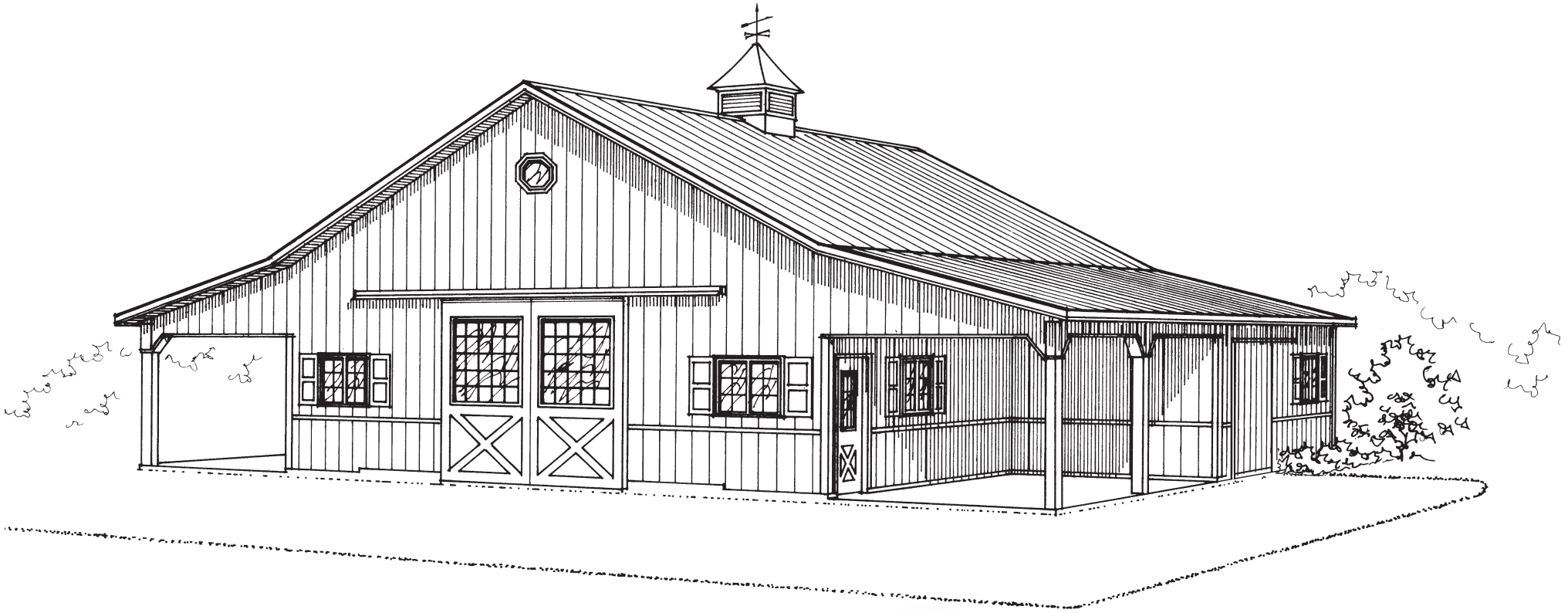
**INDUSTRIAL-STRENGTH GARAGE WITH PLEASANT RECREATION AREA** provides an ideal balance when you need a place to bring your work home but want space to relax as well. The roomy shop has large doors and high clearance to accommodate heavy equipment. Park and work on your semi truck, service vehicle, large tractor, etc. On weekends, you'll enjoy the game room which can be used as a guy hangout or a family entertaining center where the comfortable front porch provides a pleasant place for crowd spillover. The raised floor system on the "pleasure" section makes it a snap to run plumbing and other utilities.





# INDUSTRIAL-STRENGTH GARAGE MEETS REC CENTER



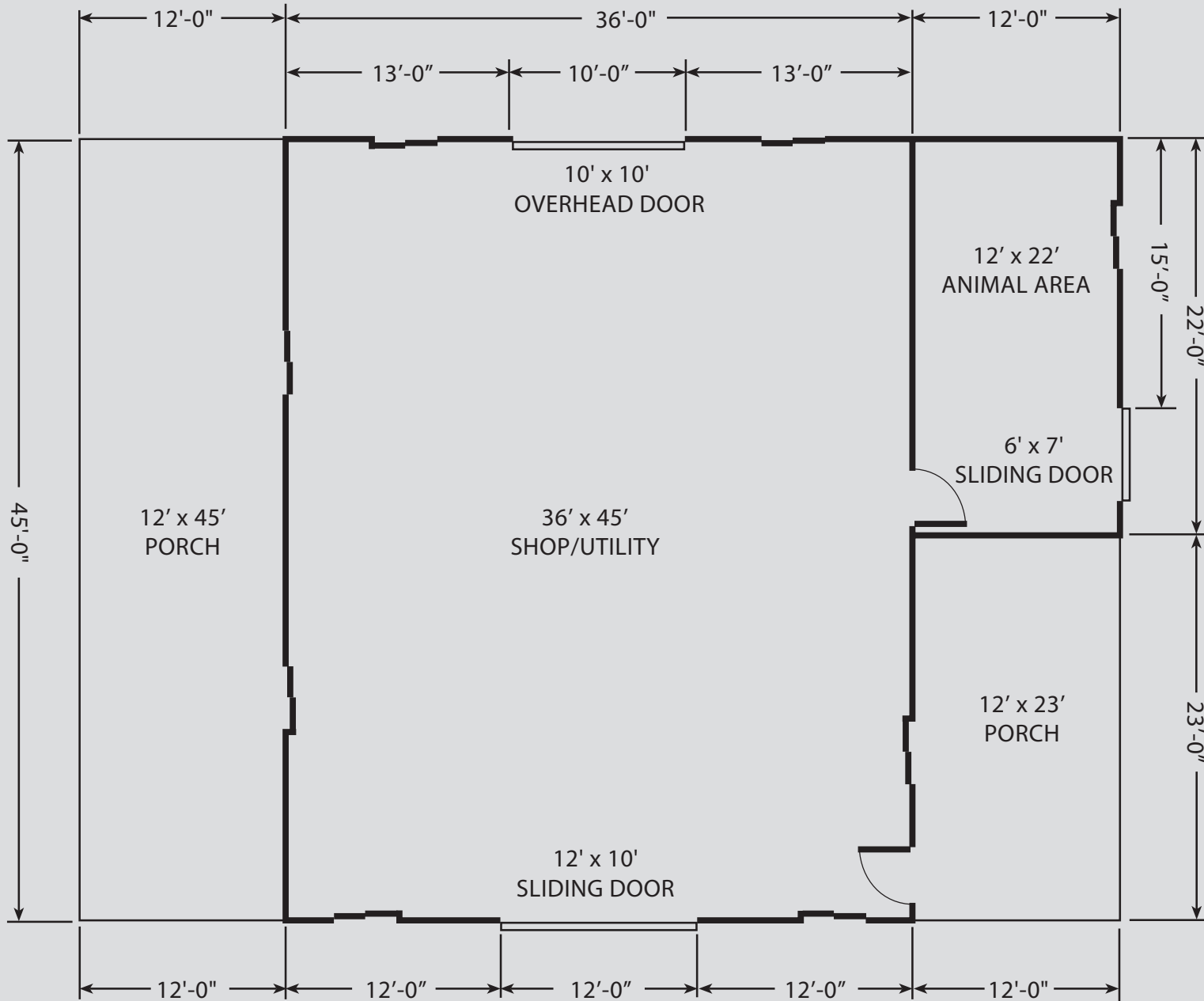


# *Southern Statesman*

## A TOUCH OF BLUEGRASS ELEGANCE

makes this plan popular, whether you intend to put animals inside or not. As shown, it's ideal for a couple of 4-H animals or family pets, but if keeping several horses is your dream, the shop/utility area could easily accommodate two rows of stalls. Of course, if riding Harleys or classic cars is more your style, there is plenty of room for all the toys a guy or gal could want.

# A TOUCH OF BLUEGRASS ELEGANCE





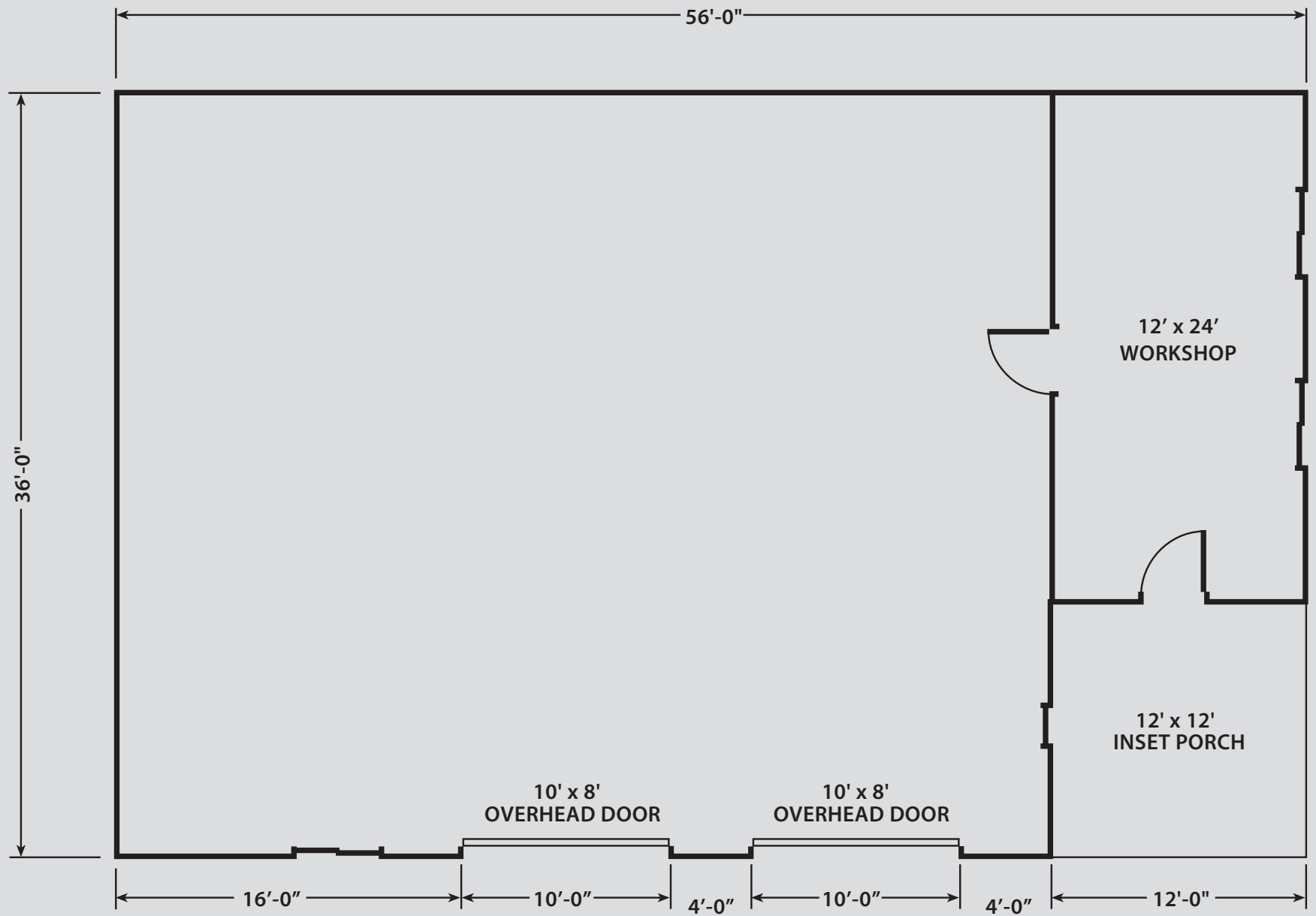


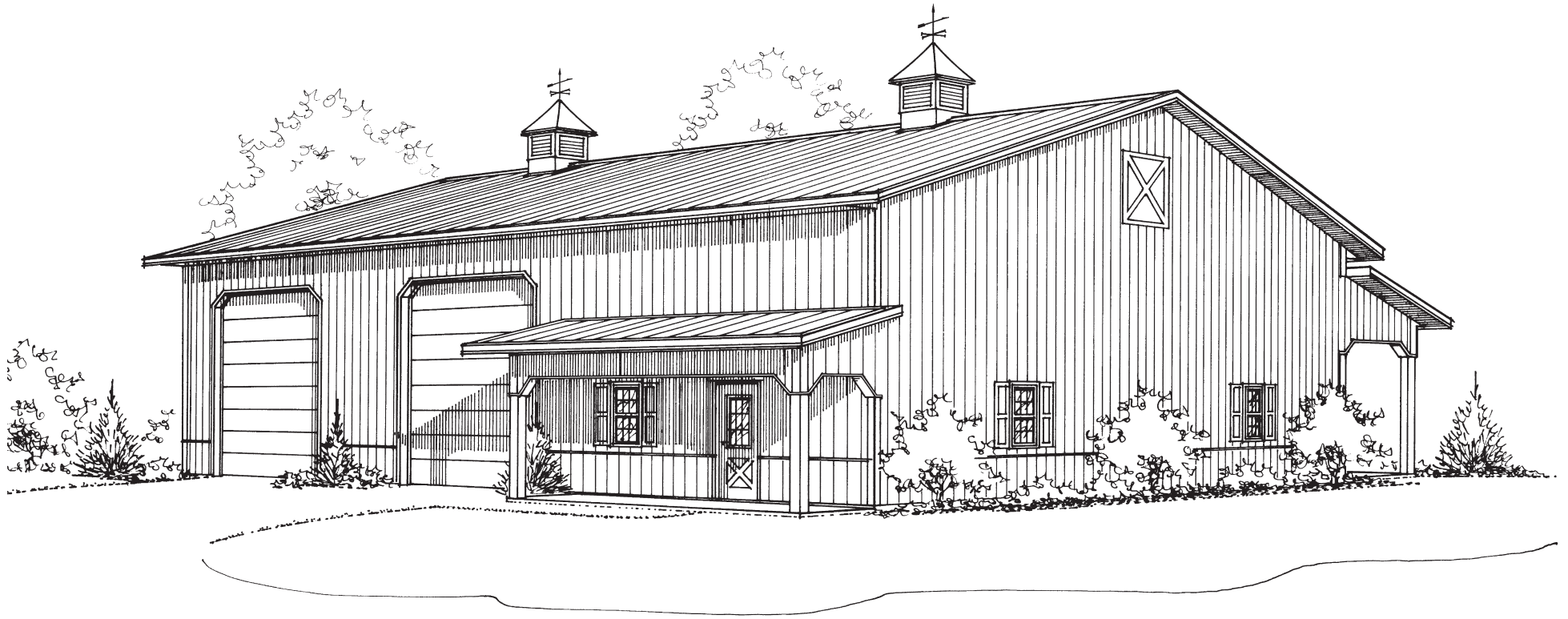
# *Backyard Beaut*

ONE OF OUR ALL-TIME CUSTOMER FAVORITES!

The sheltered porch provides a welcoming entrance and presents an ideal place for little decorative touches, like a park bench, hanging plants, and flowers. Inside, you'll enjoy the spacious workshop: an ideal getaway place for Dad or an area where the entire family can work on projects together. The main part of the building provides plenty of parking space for your cars, trucks, mower, 4-wheeler, and whatever else you've been wanting to get out of your house garage.

AN ALL-TIME CUSTOMER FAVORITE





# *Crossover Delight*

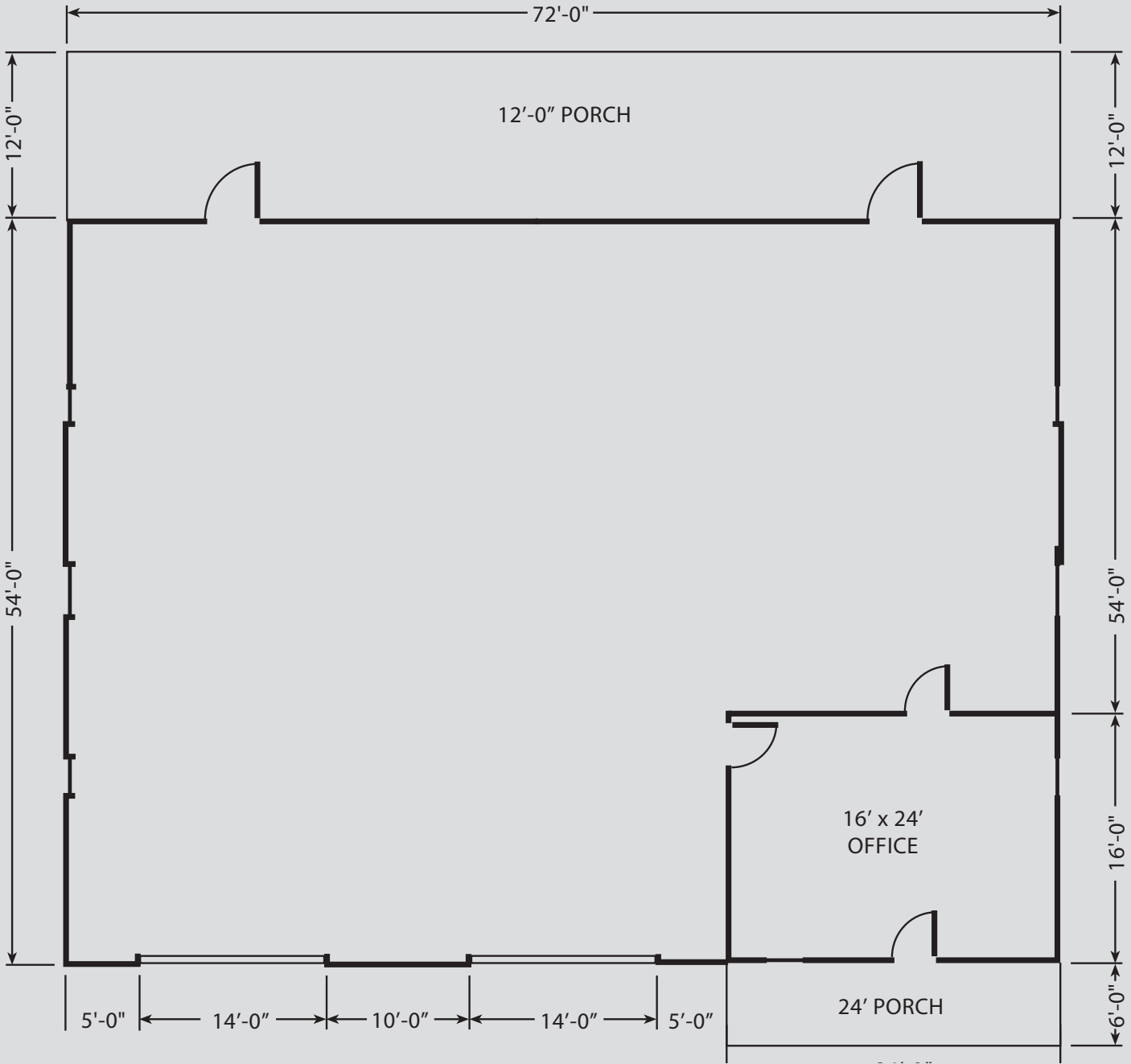
## THE IDEAL “HIS” AND “HERS” BUILDING

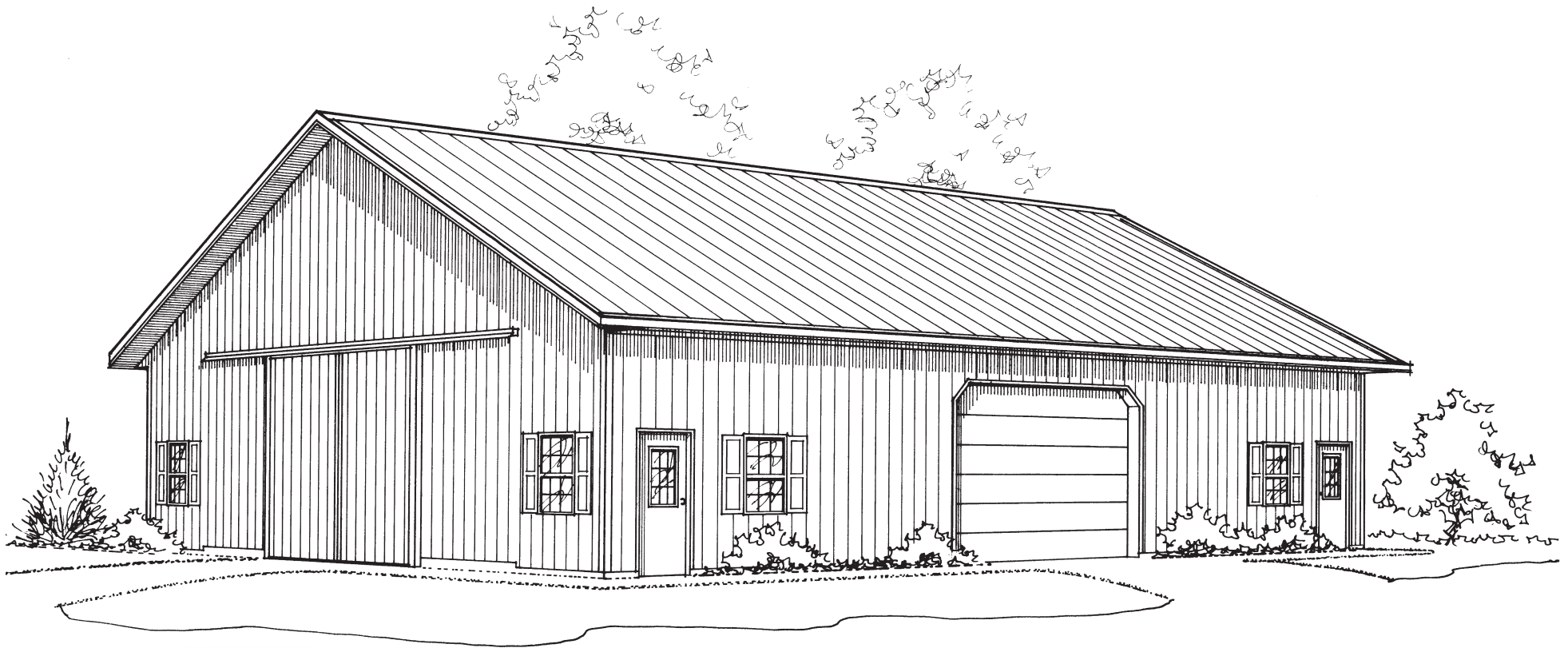
accommodates hobbies dear to both genders. Front side includes large overhead door leading to the shop. He can park his camper and boat. Plus, he has a spacious office. In back, you’ve got a covered porch for entertaining or shade for your horses.





ACCOMMODATES HIS HOBBIES, AND HERS



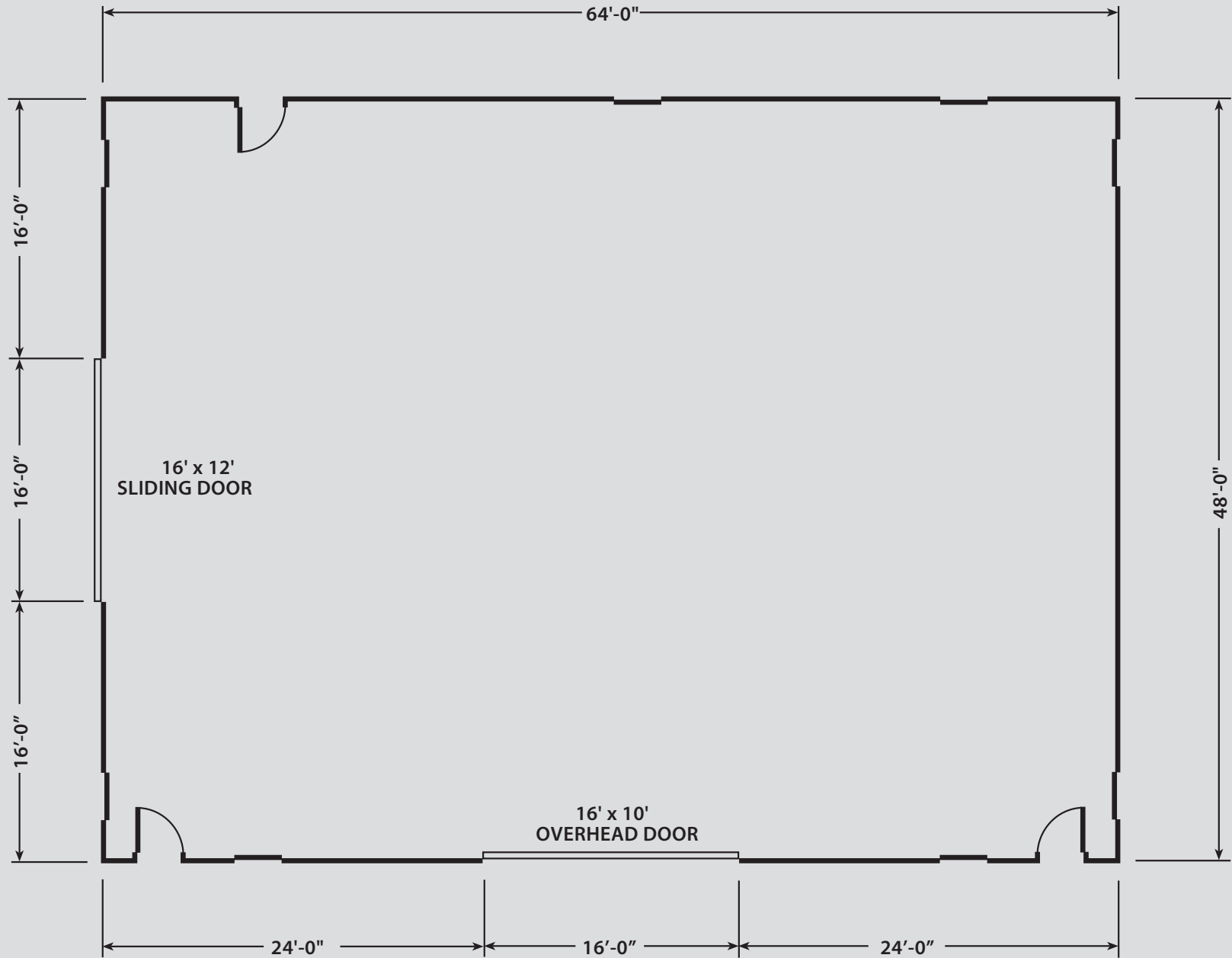


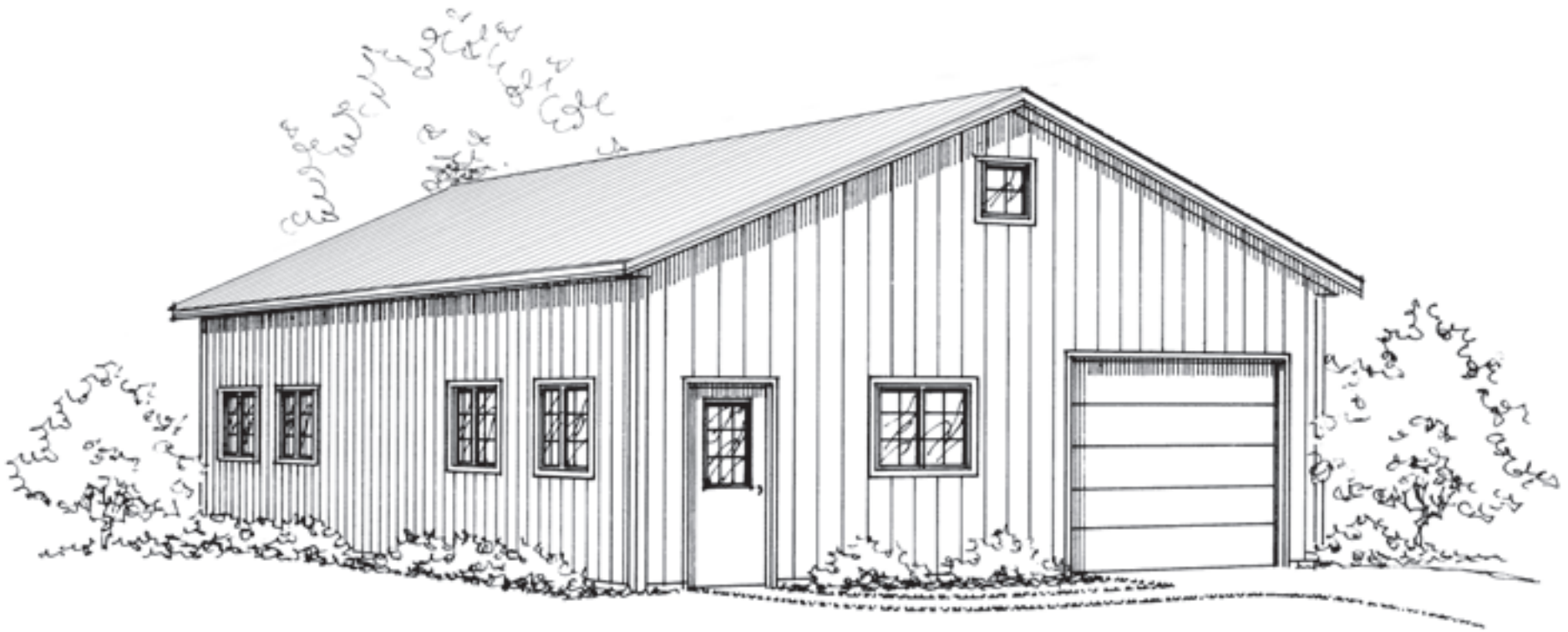
## *Clearspace Classic*

### LOTS OF SPACE AND POTENTIAL

make this plan stand out. Many people need a building but haven't completely figured out what they want to do with their new space. So... start with an open building and then plan the inside at your convenience. Maybe you'll add a workshop later. Or maybe not. Having plenty of unobstructed storage space is a good plan in itself!

LOTS OF SPACE AND POTENTIAL





# *Grandpa's Workshop*

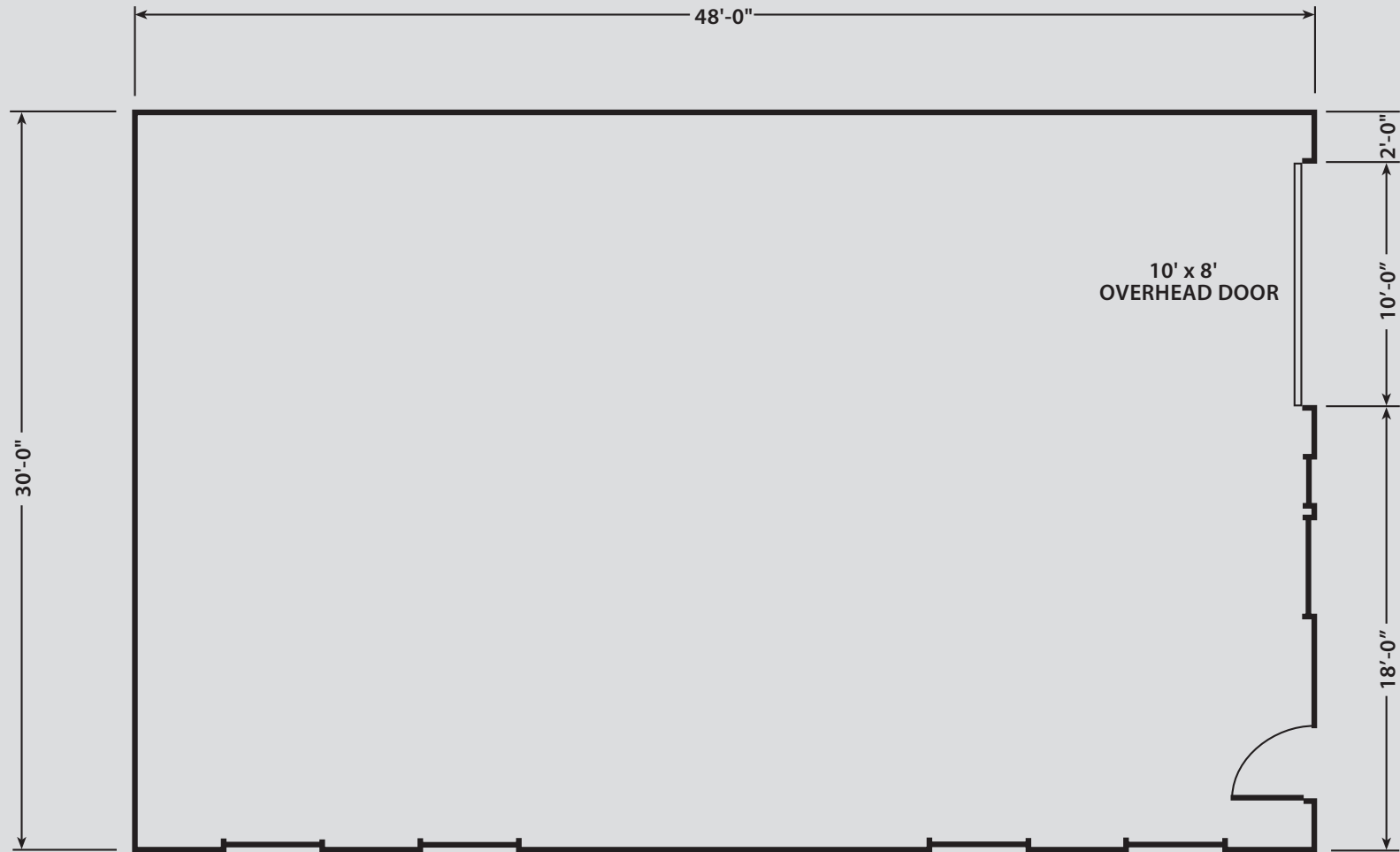
IDEAL FOR SMALLER ACREAGES,

this building is designed primarily as a workshop and secondarily for vehicles. Five double windows provide an abundance of cheery light above your workbench.

This could be a woodworker's dream shop, with plenty of length to accommodate long boards and big projects. Leave it all open or divide it down the center. Either way, there is ample space for pulling in your truck and bass boat and keeping an assortment of bikes, utility vehicles, camping equipment, and more.



IDEAL FOR SMALLER ACREAGES





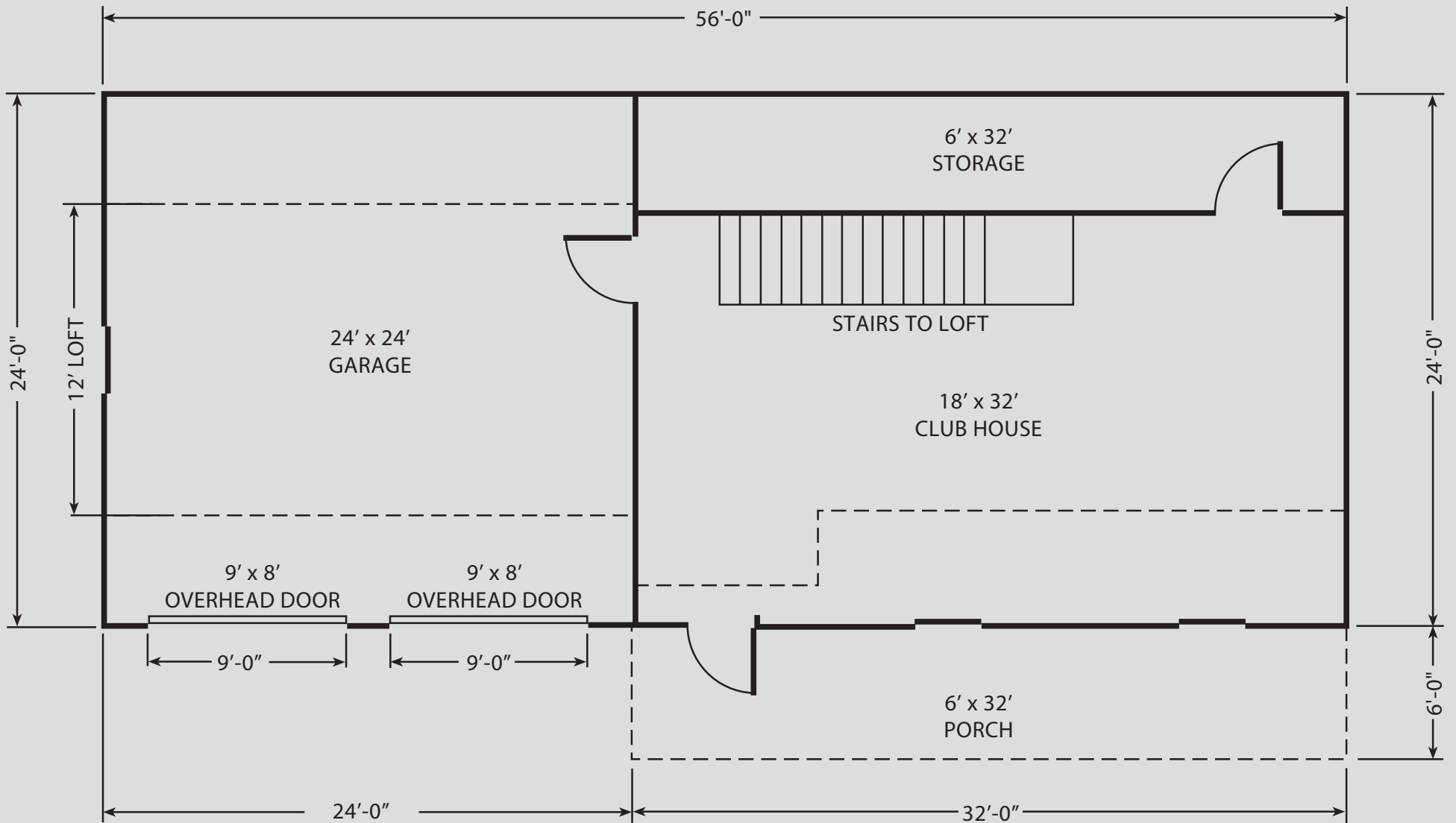
# *Cambron Clubhouse*

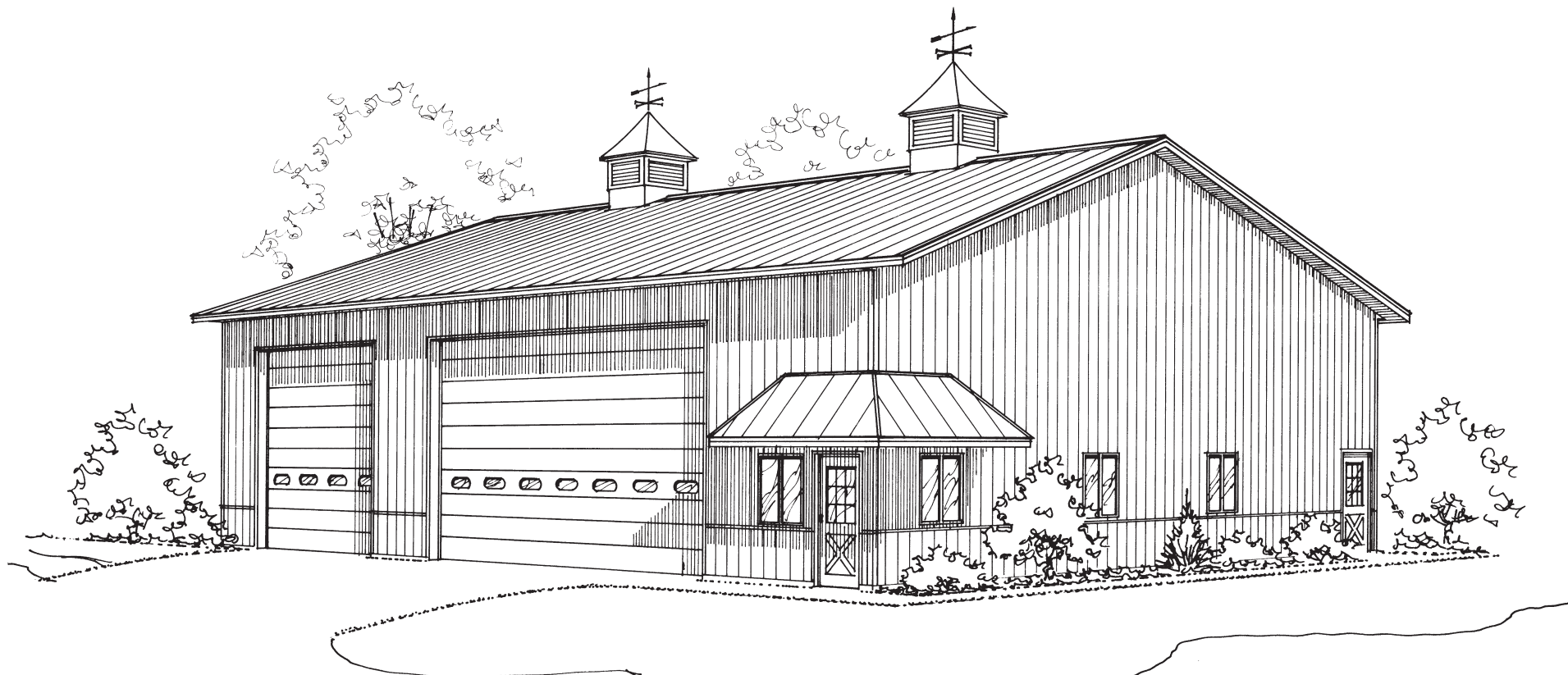
MAKE YOUR PLACE THE PLACE TO BE

with this popular two-story plan. Two-garage stalls provide the extra sheltered parking you've been needing. But don't just build a garage. Build a destination. Whether for Girl Scout meetings, church youth group events, or socializing with neighbors, you'll find lots to like with the downstairs clubhouse area and hospitable front porch. Upstairs could be storage, guest quarters, or game room. The choice is yours!



NOT JUST A GARAGE — A DESTINATION.





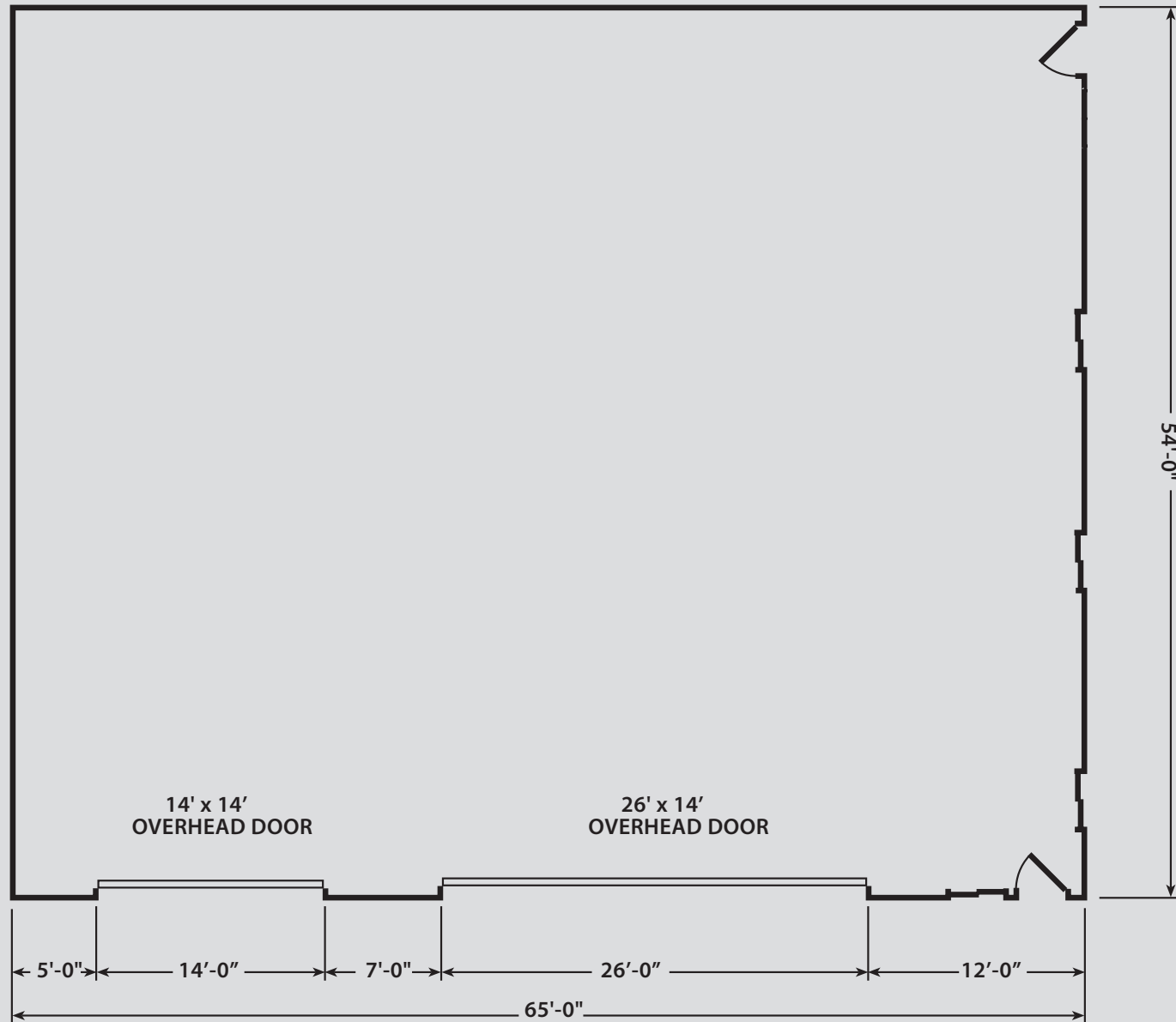
# *Sundowner Shed*

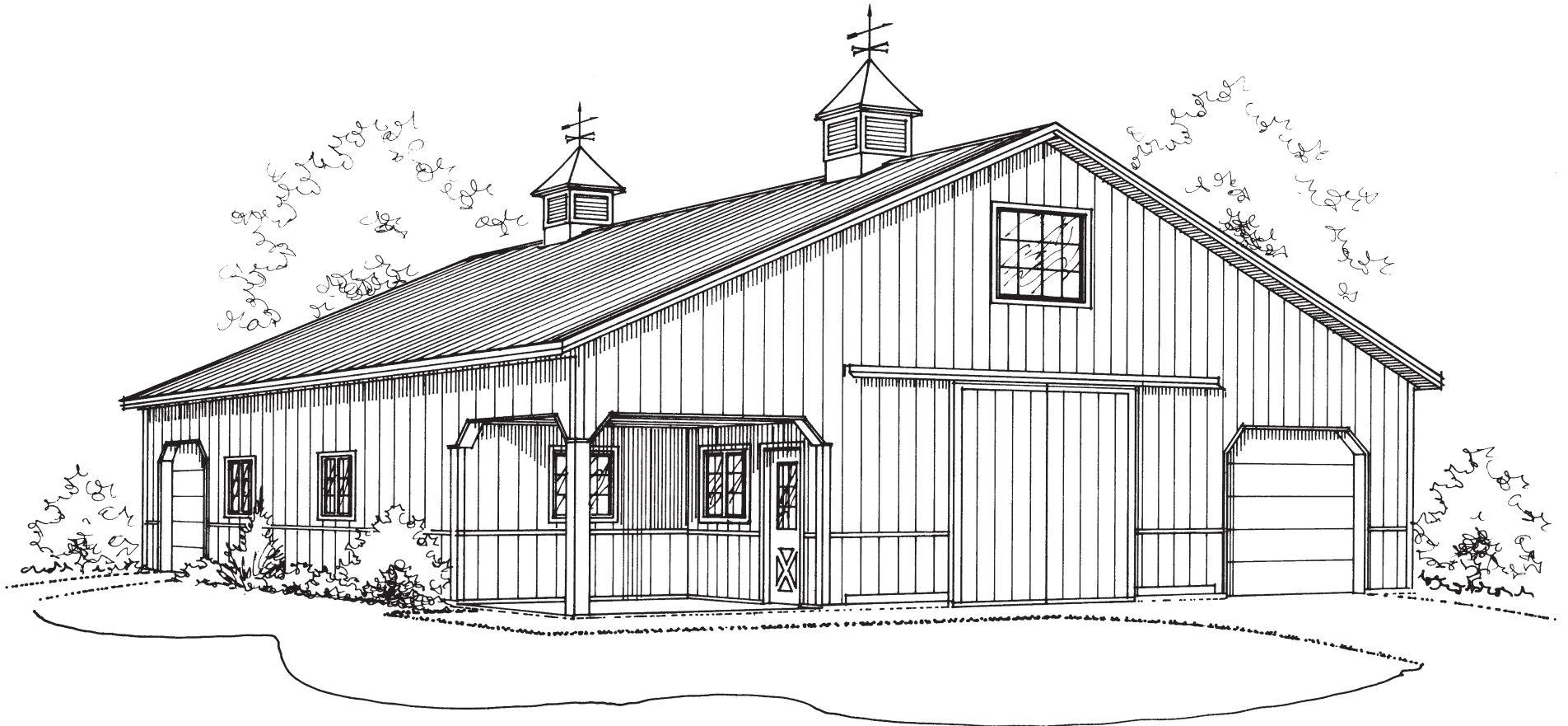
## TAILORED FOR THE NEEDS OF THE HOBBY FARMER

this building has generously sized overhead doors to accommodate all but the largest farm equipment and includes plenty of workbench and tool space to the side. It's a compact, sharp-looking "farm" building that will gain approval from your wife and your neighbors. Of course, like any hobby farmer, this building can wear lots of hats. So if your hobby is RVing or camping instead of "playing in the dirt," this plan may still be the one for you.



DESIGNED FOR HOBBY FARMER NEEDS



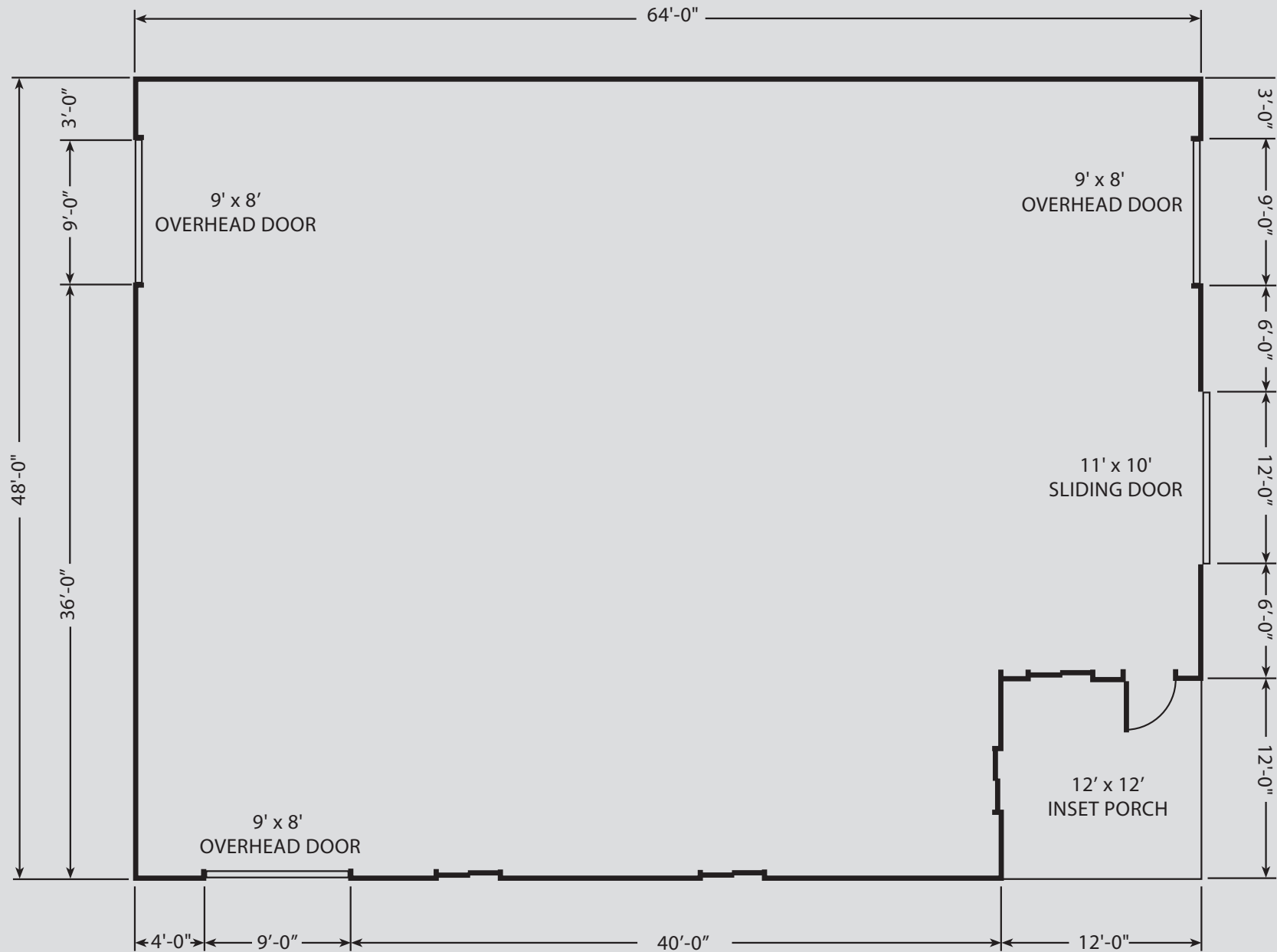


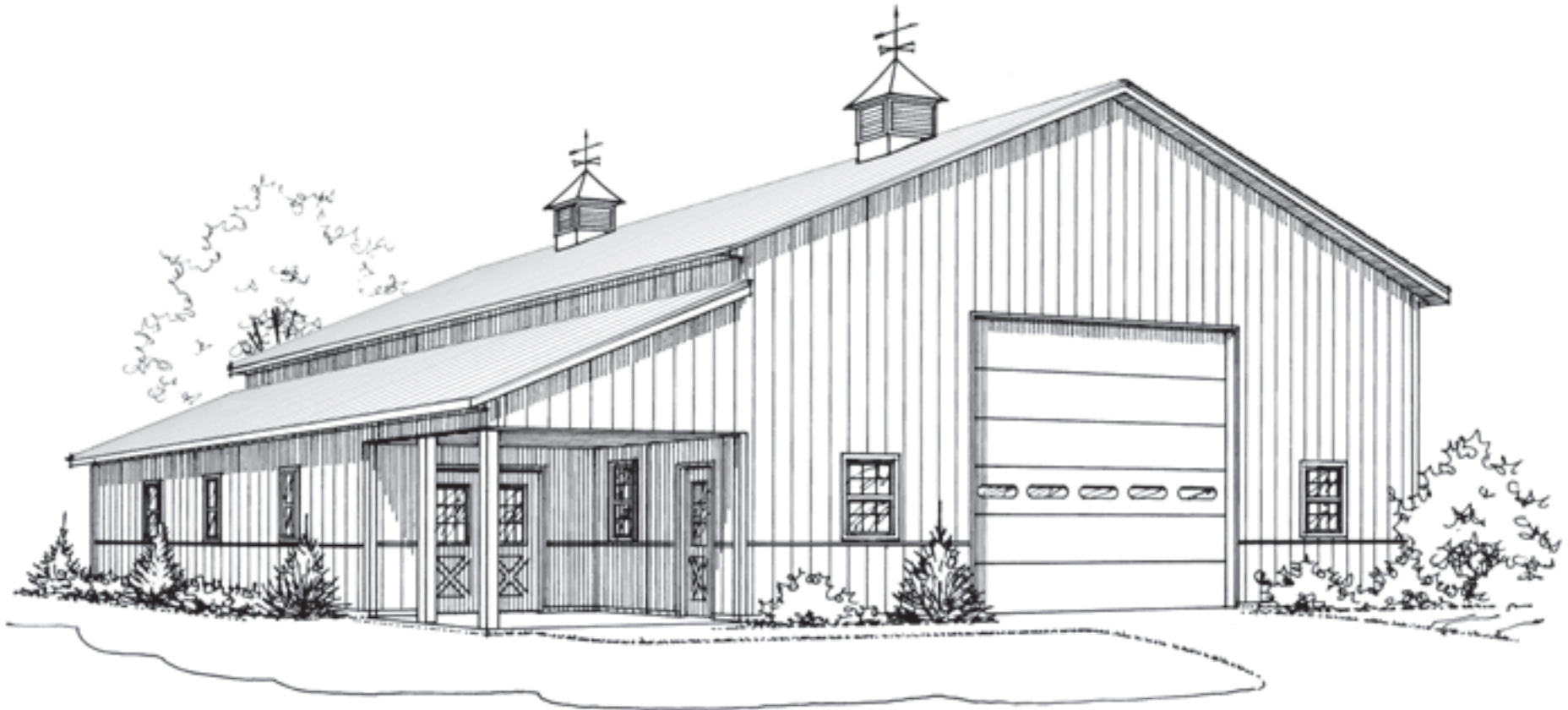
# *Country Crossroads*

## THE HUB OF YOUR ACTIVE LIFESTYLE

this flexible building provides easy access from three sides and five doors. You can pull the utility tractor out the front to work on some landscaping, while your daughter gets the lawn mower out the back, your spouse backs the pickup in to change the oil and your son roars out another door on his ATV. You'll all meet up later on the porch for lemonade and conversation. Isn't life in the country grand?

# THE HUB OF YOUR ACTIVE LIFESTYLE



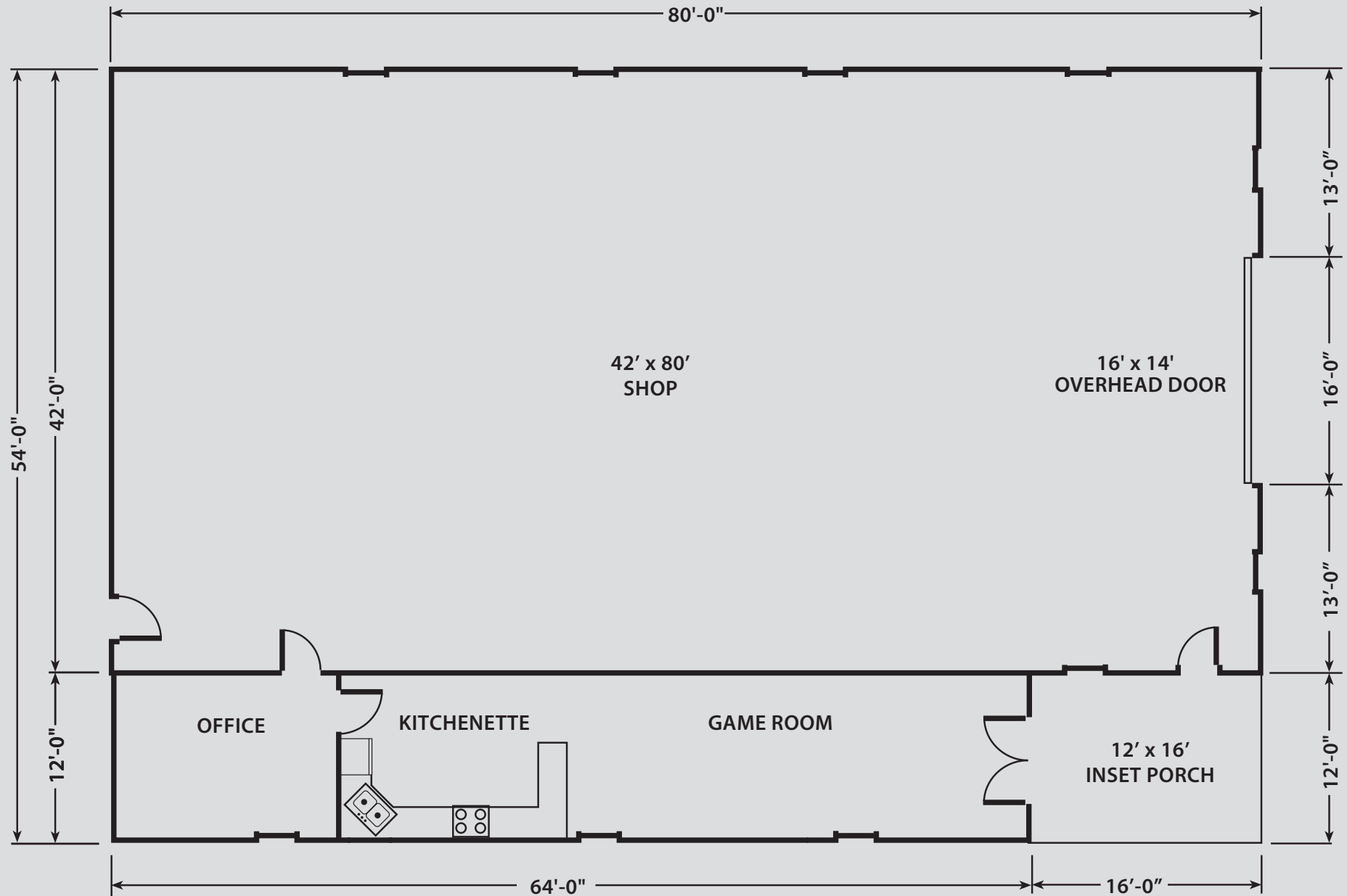


# *Sportsmen's Club*

WHETHER YOU ENJOY HUNTING, FISHING, or just entertaining friends, the lean-to portion of this plan has you covered. It offers kitchen space for fixing light meals (or cleaning fish) and plenty of room for playing pool with the guys. Tucked away in back is a private office or den where you can get caught up on emails in between your outdoor activities. And of course, we included a large open shop/garage area to house all your "toys"!



BUILT FOR COUNTRY ENTERTAINING



# Start Your Plan Online

Each plan in this book is available for you to customize using our online design tool, the FBiPlanner™. To access these plans, go to [www.FBiBuildings.com/Plan-Book](http://www.FBiBuildings.com/Plan-Book)



Available exclusively on [www.fbibuildings.com](http://www.fbibuildings.com) is a FREE, powerful application that lets you experiment with building floor plans using scaled icons of almost anything you're likely to put in a building – vehicles, equipment, shop items, animals and building components.

With the FBiPlanner™ you can:

- Choose from pre-designed templates or design your own floor plan
- Test various layouts – choose the one that best meets your current and future needs
- Resize, rotate, move and colorize scaled icons of vehicles, equipment, etc.
- Verify door locations and sizes
- Make sure your stuff fits and decide where to put it
- Save, print and Email your plans



Every plan in this book is included in the online tool and available for you to experiment with in the FBiPlanner™.

Go to: [www.fbibuildings.com/plan-book](http://www.fbibuildings.com/plan-book)

The renderings in this book are artistic renditions that may not be precise representations of the actual buildings.



---

3823 W 1800 S | Remington, IN 47977

1 (800) 552-2981 | [FBiBuildings.com](http://FBiBuildings.com)